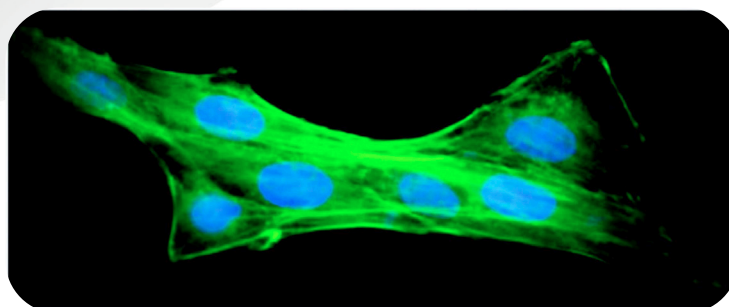


MULTILED Light Source

Four LED channels with USB controller

DATASHEET

Ultra stable, ultra bright, modular illuminator for epifluorescence and transmitted light microscopy, macroscopy & optogenetics.



The MultiLED includes USB control and a graphical user interface as standard. LED heads can now include memory to set and show LED information and operating parameters on a built-in alphanumeric display.

"Boost" mode available for temporary LED overdriving while maintaining protection and programmable timers with millisecond resolution and microsecond accuracy now included.

APPLICATIONS

- Multi-wavelength fluorescence microscopy
- Visible/IR transmitted light microscopy
- Optogenetics using fibres or epi-illumination
- Macro fluorescence imaging/Optical Mapping
- Flash photolysis
- Dedicated dual LED heads available for fura2 or other dual excitation dyes

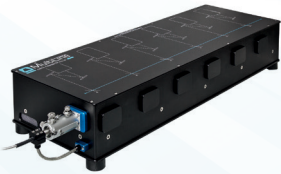
KEY BENEFITS

- New four channel version
- USB control and GUI included as standard
- Alphanumeric display to show LED information and parameters
- Existing modular LED head design for full compatibility
- Wide variety of LED wavelengths available
- LED heads include optical feedback for near perfect stability
- LED heads include memory to display LED information and parameters
- Fast (<10 microsecond) switching via external digital inputs
- Similarly fast analog intensity control via front panel, external input or USB

ILLUMINATION SYSTEMS

DATASHEET

INTENSITY, STABILITY AND FLEXIBILITY



MultiLine LaserBank

Modular and versatile laser launch system allows for use of up to six solid-state lasers from multiple manufacturers. Ideal for TIRF, spinning disk confocal, FRAP and optogenetic applications or any combination of these with multiple outlets via single or multi-mode fibres. Provides the convenience of a custom, turnkey system.



TriLine Laser Bank

The TriLine shares much of the modularity and flexibility of the MultiLine, but in a simpler and more compact package (up to 3 lasers). The design offers the flexibility to configure output ports via single or multi-mode fibres (or free space on request) for TIRF, FRAP, photolysis, spinning disk confocal, optogenetics and other research applications.



Aura Pro

Easy to use and affordable LED transmitted light source for phase imaging on a variety of inverted microscopes. Supports PhL, Ph1 and Ph2 phase objectives, or can be used as a standard brightfield transmitted light source. Triggerable, with an extended working distance ideal for use with micromanipulators.



OptoLED

The OptoLED is our flagship system for LED illumination. Dual channel LED controller with ultra-high stability and "instantaneous" (sub-microsecond) vibration-free TTL switching and analogue intensity modulation.



MonoLED

Compact and affordable single LED white light illuminator for brightfield, phase contrast or DIC imaging, available with a wide range of microscope adapters. Convenient for any application requiring a simple LED illuminator.



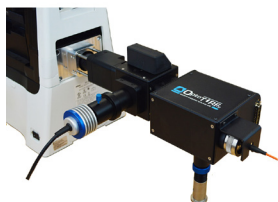
OptoScan

The only monochromator that provides submillisecond control of both centre wavelength and bandwidth. Provides unmatched versatility for fluorescence measurements, photometry and optical scanning. A lab workhorse!



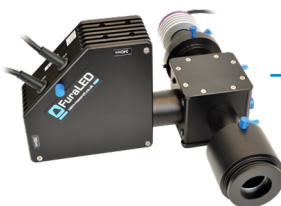
MultiPort Illumination Couplings

Easily and efficiently couples multiple light sources (light guide, laser or LED) into a single epi-illumination path. Well suited for optogenetics, photolysis and photoactivation. Can include independent field stops or pinholes.



OptoTIRF V2

The OptoTIRF is a compact and powerful, yet inexpensive, motorised TIRF illuminator designed to fit onto any research-grade inverted microscope. It gives the researcher intuitive and dynamic access to the entire back aperture of the objective with joystick or software control and simple storage and recall of preset positions



FuraLED

Compact and optimised LED illuminator for 340nm / 380nm ratiometric Fura-2 fluorescence imaging with integrated filters. Fast switching with photodiode feedback stability when used in conjunction with our OptoLED dual channel LED controller. Couples to a variety of upright / inverted microscopes or macroscopes.