



lifecanvas
technologies

Revolutionizing bioimaging
to elevate human health.

Introducing MegaSPIM

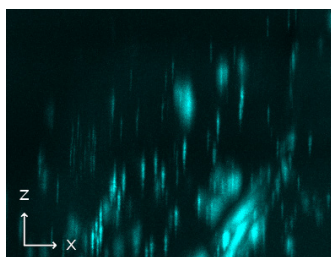
High-resolution light sheet microscopy
for a wide range of samples

- **One system, many applications:** Rapidly image thin sections and a variety of cleared tissues, including thick human or other primate brain sections, and arrays of smaller samples such as whole rodent brains or organoids.
- **High-throughput volumetric imaging:** Obtain uniform axial resolution across the entire FOV with patented axial sweeping technology, and quickly image large or multiple samples with dual camera acquisition.
- **Complete solutions, from tissue prep to publication:** Access custom tissue processing, mounting, and analysis solutions for different sample types, and leverage our post-processing power for large data sets.

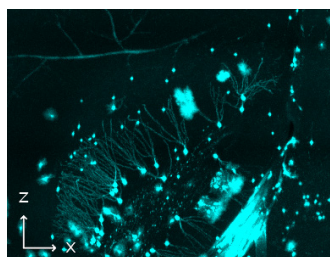


Visit our website
or email us to
learn more and
stay updated.

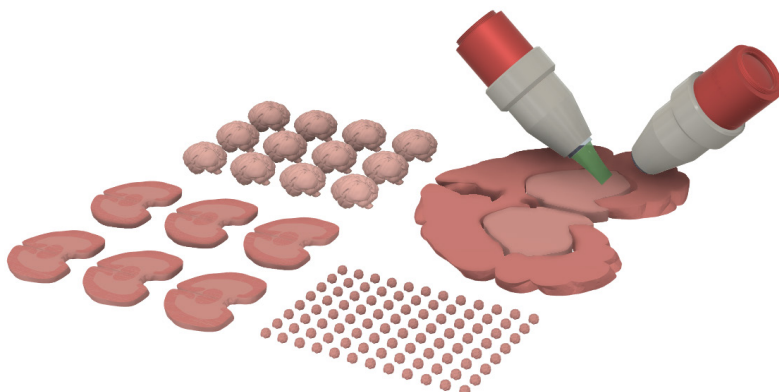
Without axial sweeping



With axial sweeping



Endogenous tdTomato in mouse cortex, 1.8X magnification



TECHNICAL SPECIFICATIONS

Light Sheet Formation	Dynamic axial sweeping (<i>Dean et al. 2015</i>)
Specimen Lateral Size	Up to 200 mm x 200 mm
Detection Objective	1.8X, 3.6X, 9X, 15X, 22X
Camera	Hamamatsu ORCA-Fusion Digital sCMOS camera (2304 x 2304 pixels) with lightsheet readout mode
Dual-Camera Acquisition	Doubled imaging throughput with independent focus control for each camera
Laser Lines	Up to 7, 405 - 785 nm

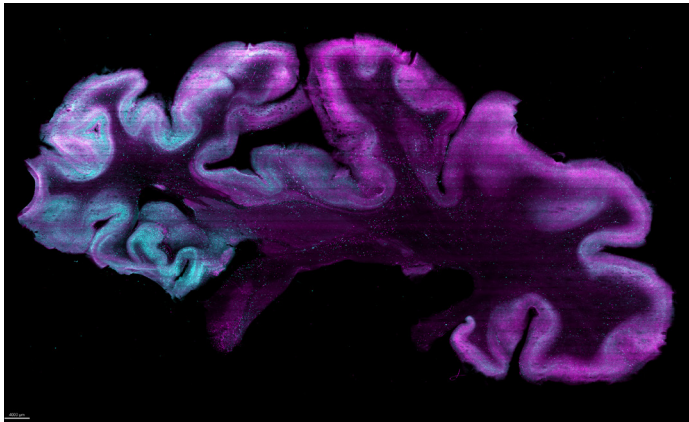
MEGASPIIM@LIFECANVASTECH.COM



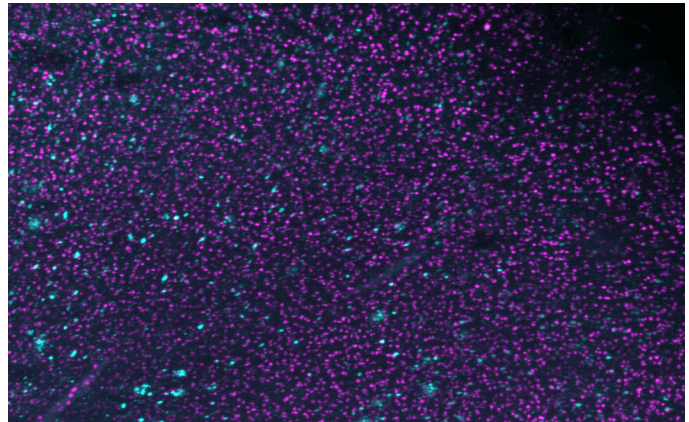
lifecanvas
technologies

Revolutionizing bioimaging
to elevate human health.

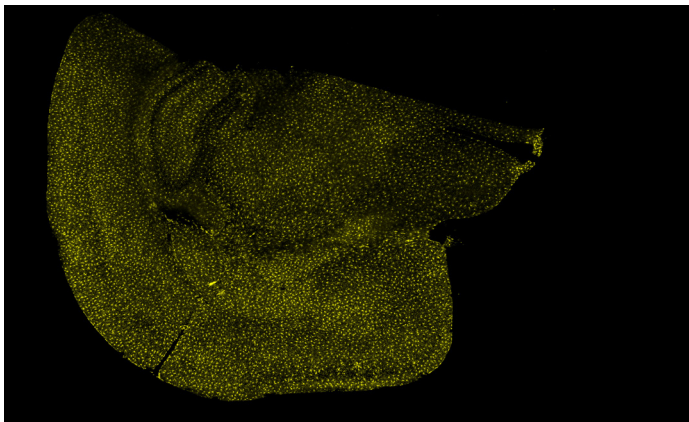
Unparalleled range and resolution for all your research needs:



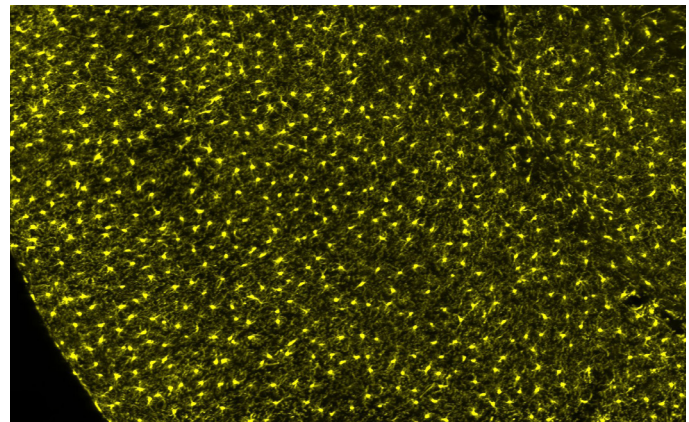
HUMAN-SCALE SAMPLES



Phospho-tau + α -Synuclein in 1mm coronal section of human brain, 1.8X magnification



Iba-1 in 100 μ m uncleared mouse brain section, 15X magnification

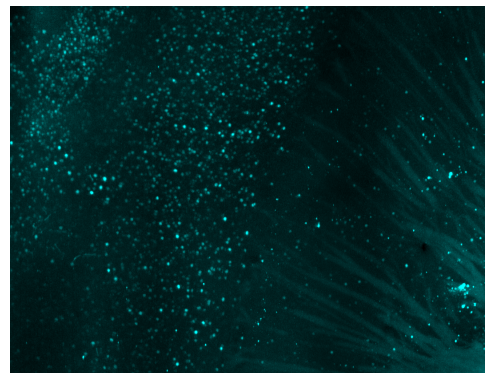
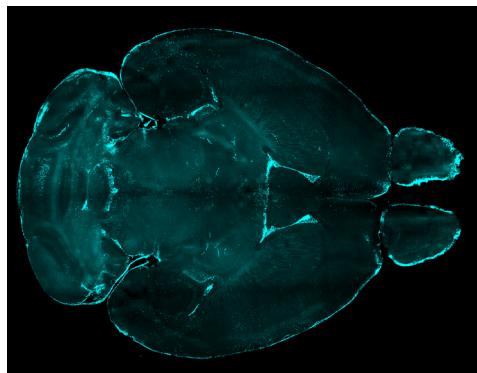


THIN UNCLEARED SECTIONS

**INTACT SAMPLES
& MUCH MORE**

Get in touch with an imaging specialist to discuss your applications.

cFOS in cleared whole mouse brain, 3.6X magnification



MEGASPIM@LIFECANVASTECH.COM