

## Camera Installation for MicroManager

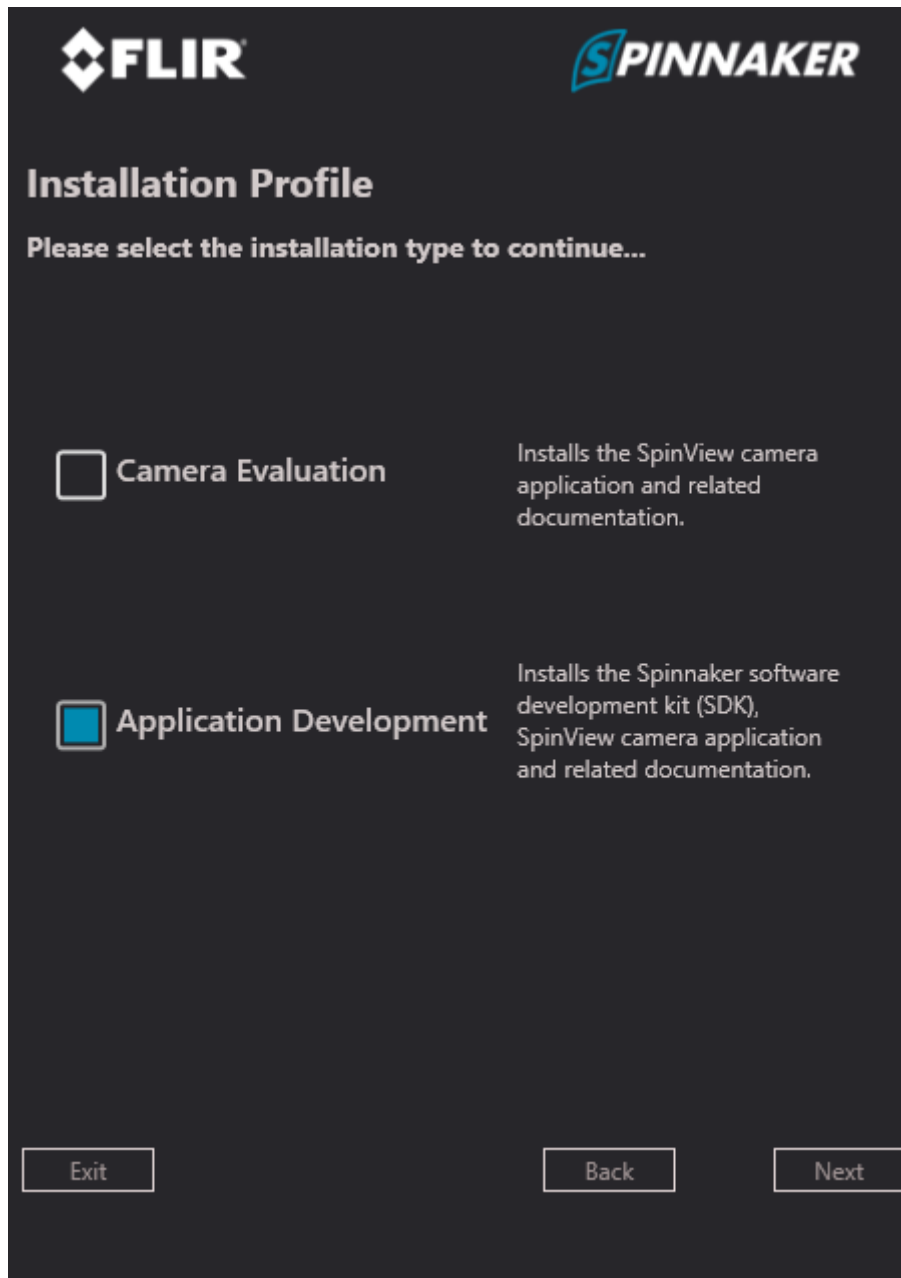
Run `SpinnakerSDK_FULL_1.15.0.63_x64`

Next

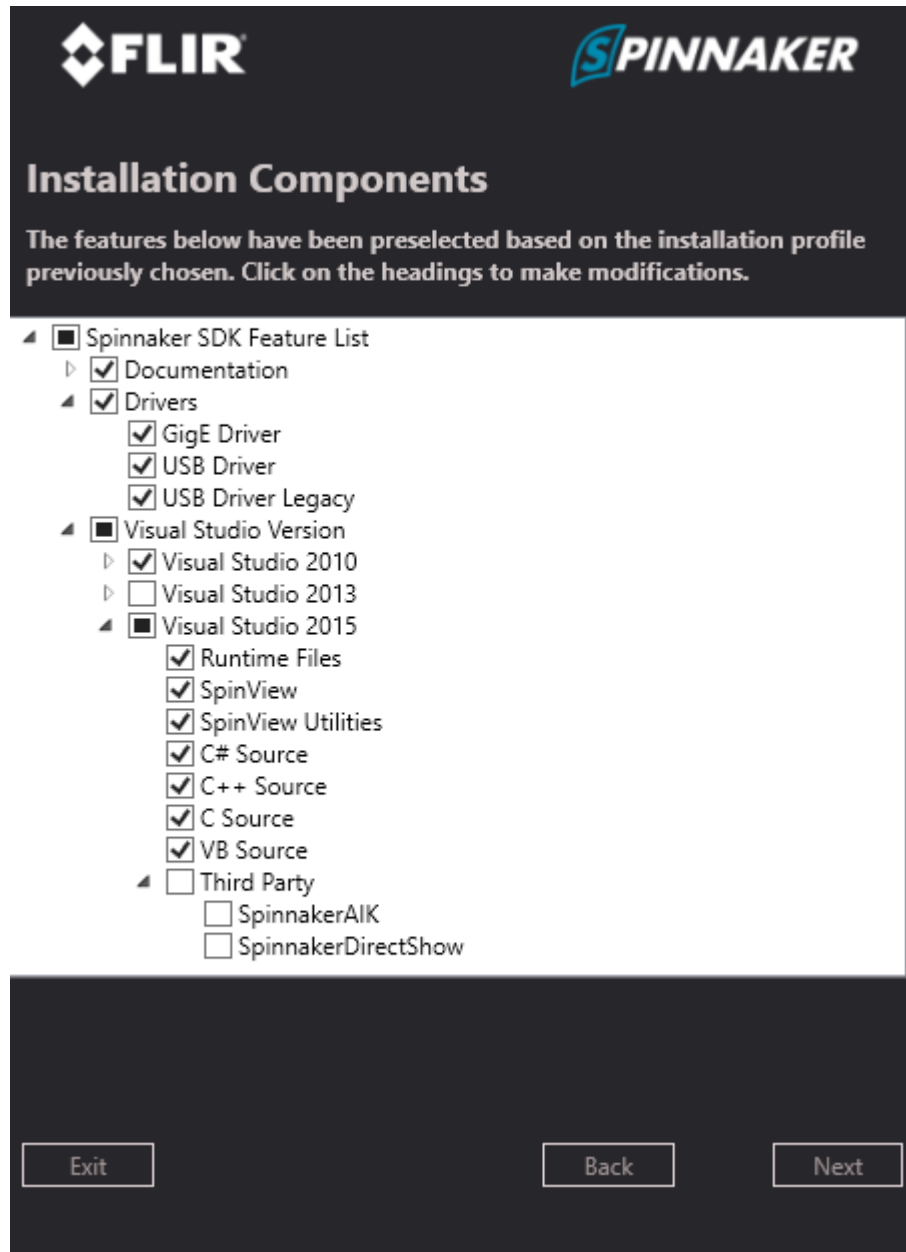
Accept T&Cs, Next

Complete user information, Next

Select 'Application Development', Next



Tick 'Visual Studio 2010', Next



Install, Yes

Spinnaker Installation Completed, Exit.

Run [MMSetup\\_64bit\\_2.0.0-beta3\\_20181129](#)

Next

Select Destination Location, Next

Select Start Menu Folder, Next

Select Additional Tasks, Next

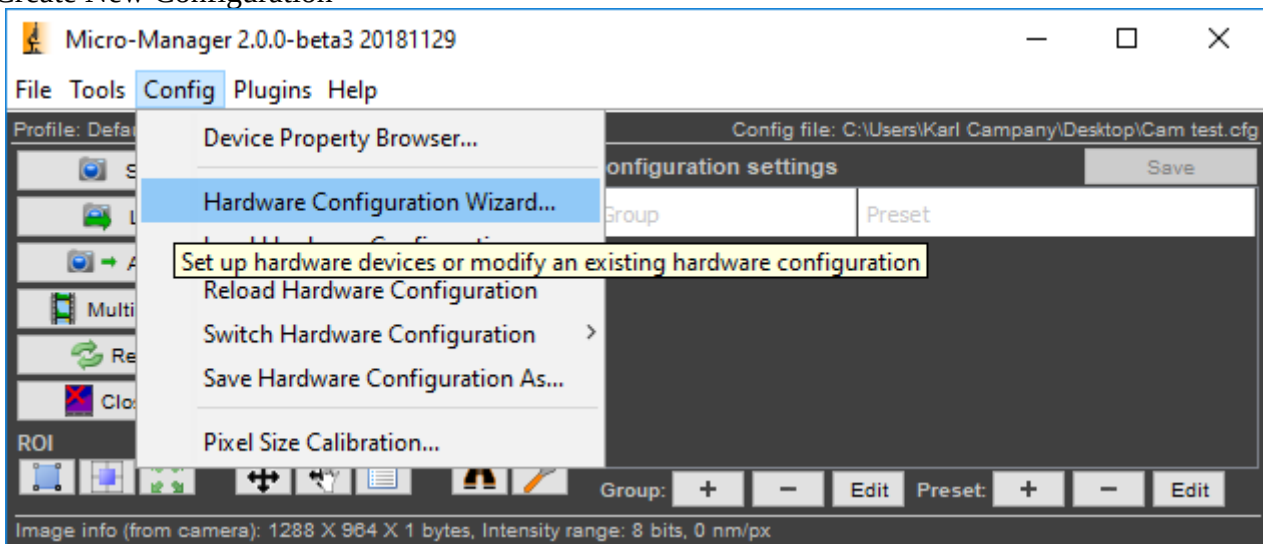
Install

Finish

Save [mmgr\\_dal\\_SpinnakerCamera \(1\).dll](#) to Destination Location folder for MicroManger (above)

Launch Micro Manager

Create New Configuration





# Hardware Configuration Wizard



Step 1 of 6: Select the configuration file

This wizard will walk you through setting up  $\mu$ Manager to control the hardware in your system.

- Create new configuration
- Modify or explore existing configuration

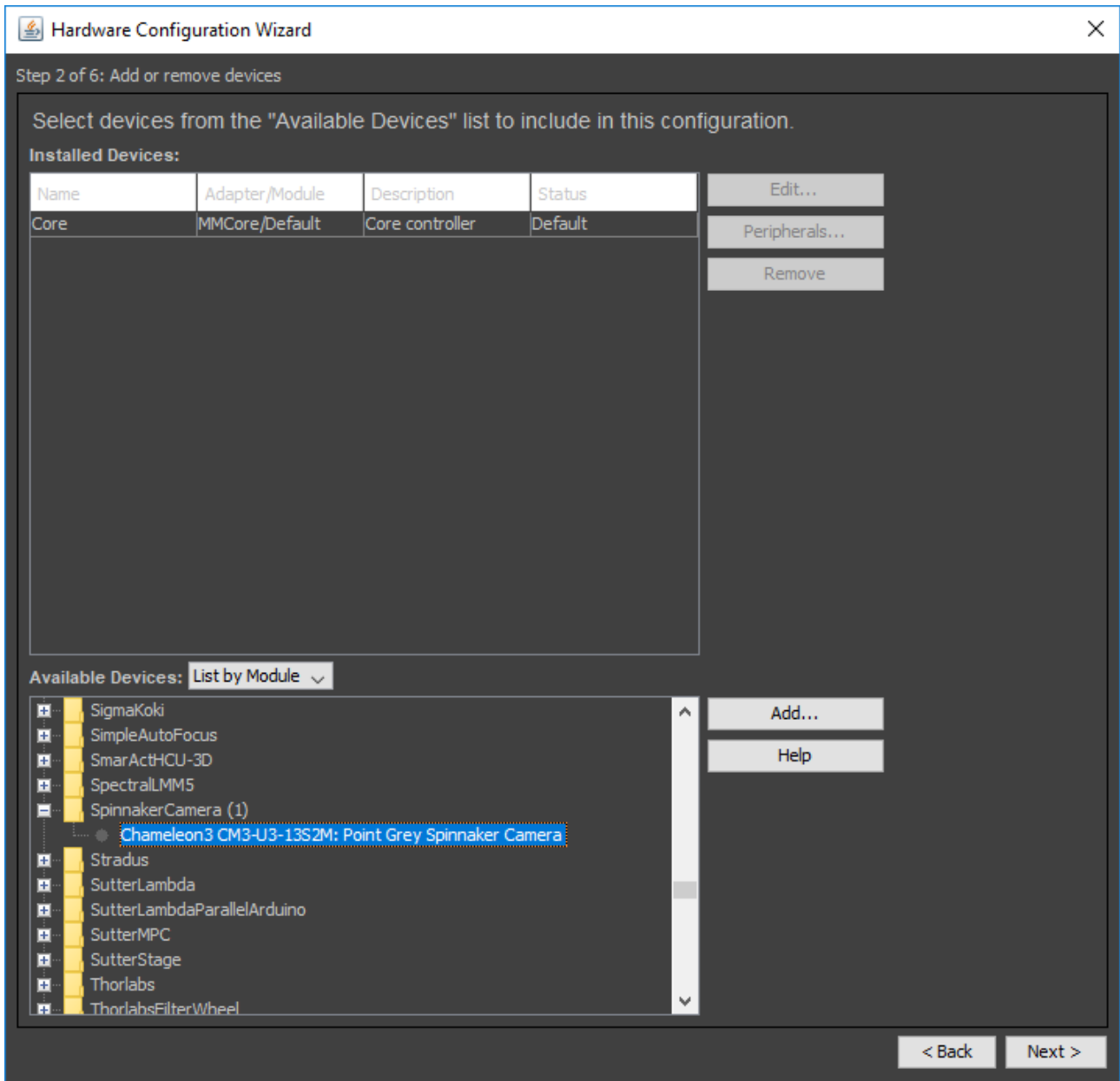
C:\Users\Karl Campany\Desktop\Cam test.cfg

Browse...

< Back

Next >

## Select Chameleon camera



Click Add, select serial number, ok

Next

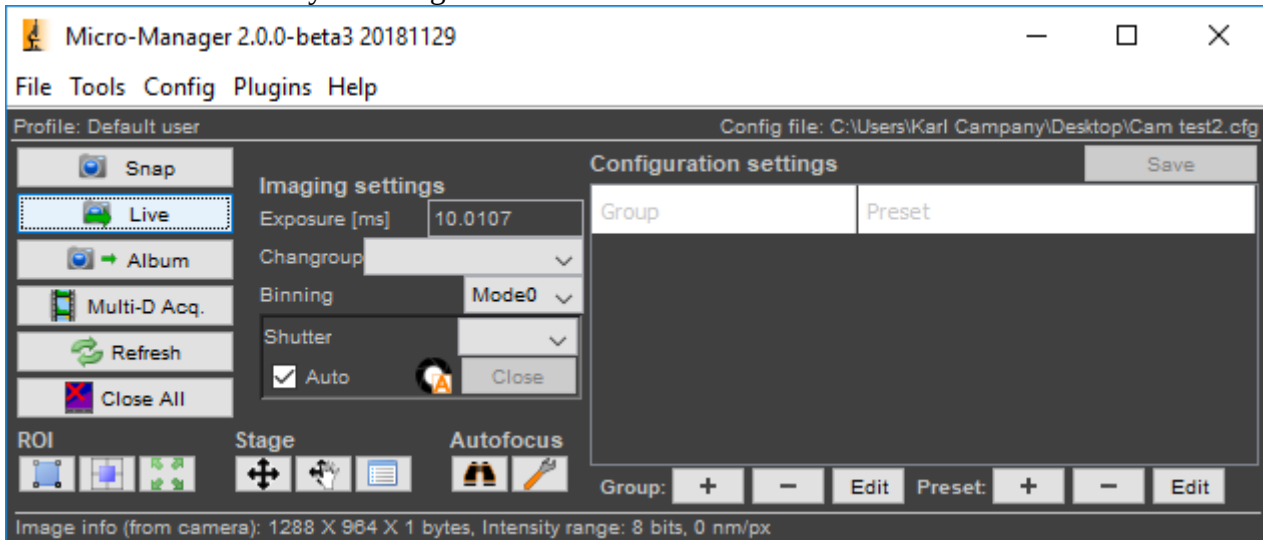
Next

Next

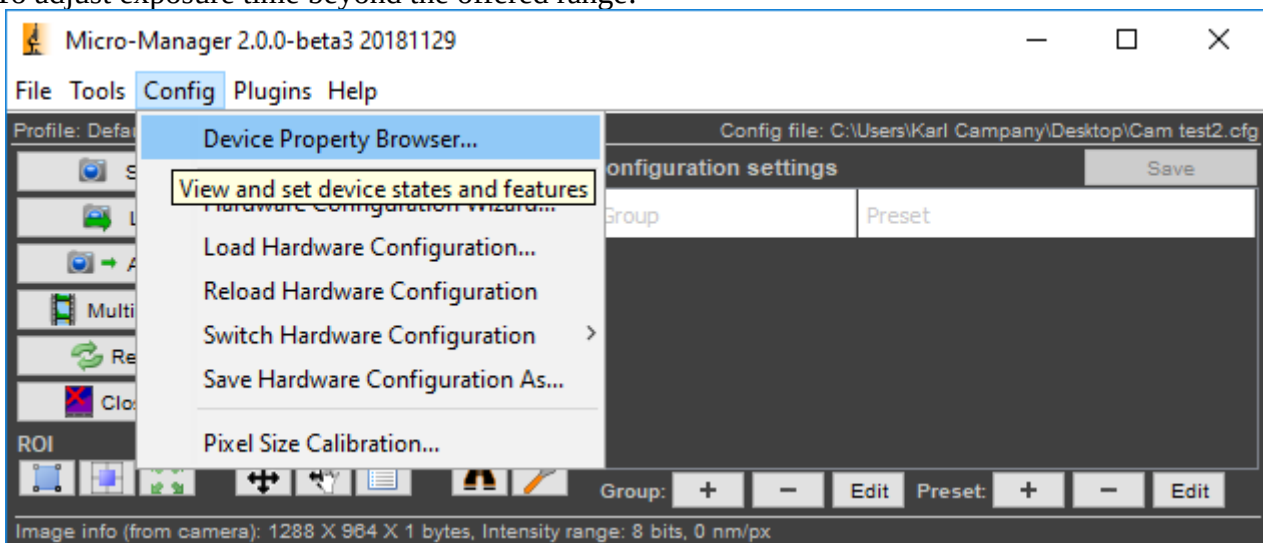
Choose where to save your config file

Finish

Camera can be viewed by selecting 'Live'



To adjust exposure time beyond the offered range:



# Change Framo Rate Auto to 'Off'

Device Property Browser
— □ ×

—Show

- cameras
- shutters
- stages
- wheels, turrets, etc.
- other devices

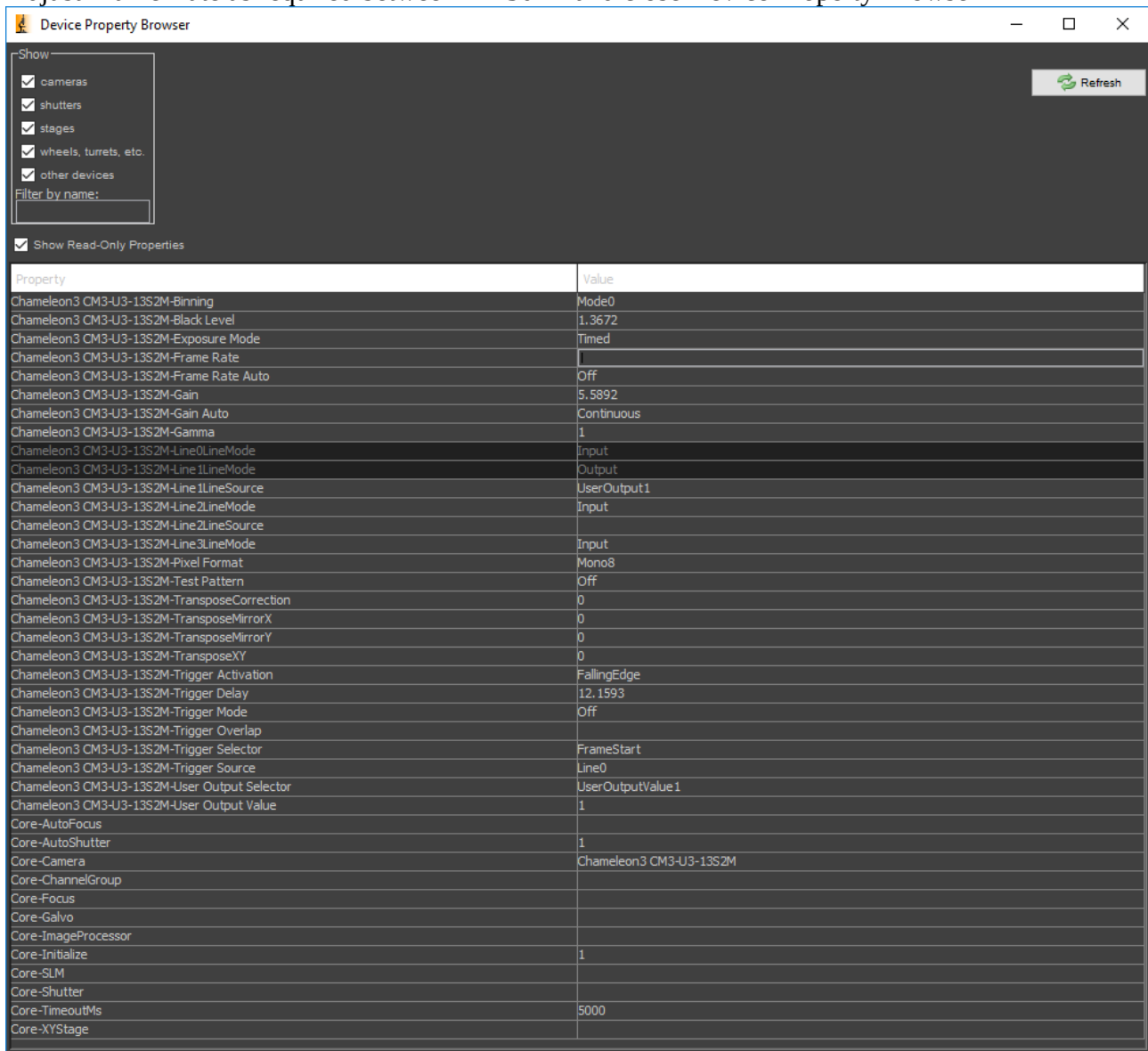
Filter by name:

Refresh

Show Read-Only Properties

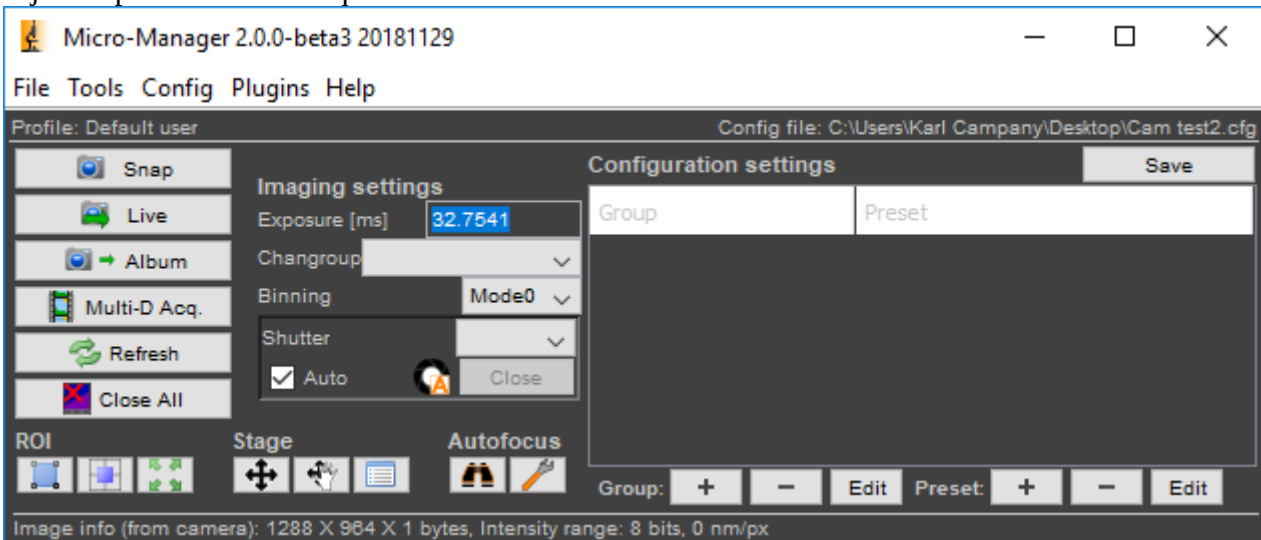
Property	Value
Chameleon3 CM3-U3-13S2M-Binning	Mode0
Chameleon3 CM3-U3-13S2M-Black Level	1.3672
Chameleon3 CM3-U3-13S2M-Exposure Mode	Timed
Chameleon3 CM3-U3-13S2M-Frame Rate	30
Chameleon3 CM3-U3-13S2M-Frame Rate Auto	Continuous
Chameleon3 CM3-U3-13S2M-Gain	Continuous
Chameleon3 CM3-U3-13S2M-Gain Auto	Off
Chameleon3 CM3-U3-13S2M-Gamma	1
Chameleon3 CM3-U3-13S2M-Line0LineMode	Input
Chameleon3 CM3-U3-13S2M-Line1LineMode	Output
Chameleon3 CM3-U3-13S2M-Line1LineSource	UserOutput1
Chameleon3 CM3-U3-13S2M-Line2LineMode	Input
Chameleon3 CM3-U3-13S2M-Line2LineSource	
Chameleon3 CM3-U3-13S2M-Line3LineMode	Input
Chameleon3 CM3-U3-13S2M-Pixel Format	Mono8
Chameleon3 CM3-U3-13S2M-Test Pattern	Off
Chameleon3 CM3-U3-13S2M-TransposeCorrection	0
Chameleon3 CM3-U3-13S2M-TransposeMirrorX	0
Chameleon3 CM3-U3-13S2M-TransposeMirrorY	0
Chameleon3 CM3-U3-13S2M-TransposeXY	0
Chameleon3 CM3-U3-13S2M-Trigger Activation	FallingEdge
Chameleon3 CM3-U3-13S2M-Trigger Delay	12.1593
Chameleon3 CM3-U3-13S2M-Trigger Mode	Off
Chameleon3 CM3-U3-13S2M-Trigger Overlap	
Chameleon3 CM3-U3-13S2M-Trigger Selector	FrameStart
Chameleon3 CM3-U3-13S2M-Trigger Source	Line0
Chameleon3 CM3-U3-13S2M-User Output Selector	UserOutputValue1
Chameleon3 CM3-U3-13S2M-User Output Value	1
Core-AutoFocus	
Core-AutoShutter	1
Core-Camera	Chameleon3 CM3-U3-13S2M
Core-ChannelGroup	
Core-Focus	
Core-Galvo	
Core-ImageProcessor	
Core-Initialize	1
Core-SLM	
Core-Shutter	
Core-TimeoutMs	5000
Core-XYStage	

## Adjust Frame Rate as required between 1 – 30Hz and close Device Property Browser



AAAQ13354

## Adjust exposure time as required



Max exposure time examples:

1Hz = 997.8763ms

30Hz = 32.7541ms