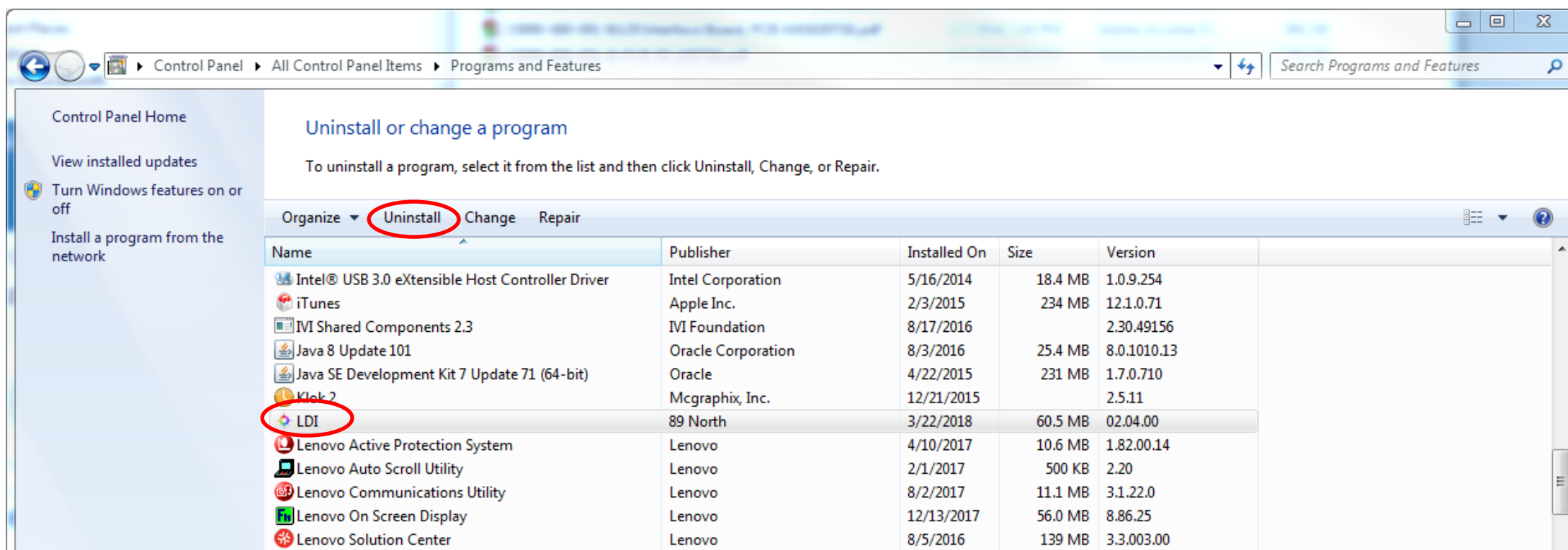


## LDI Firmware and Software Update Instructions

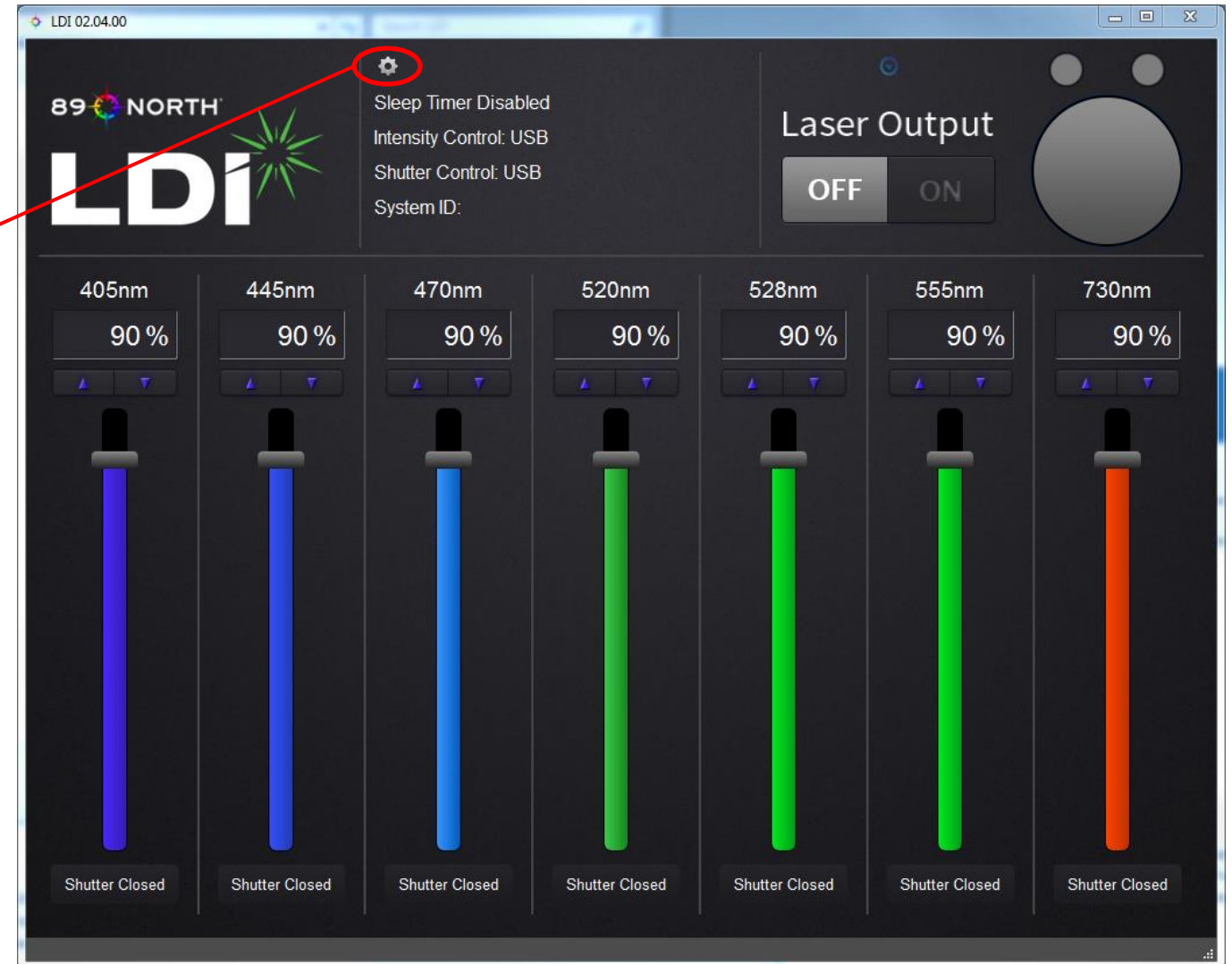
- These instructions describe:
  - How to perform a firmware update to the LDI light source
  - How to perform a software update to the LDI control software (LDI.exe)
- When updating both the LDI firmware and LDI control software (LDI.exe), first perform the LDI control software update

- First, uninstall the currently installed LDI.exe
  - Control Panel → Programs and Features, select “LDI”, select “Uninstall”

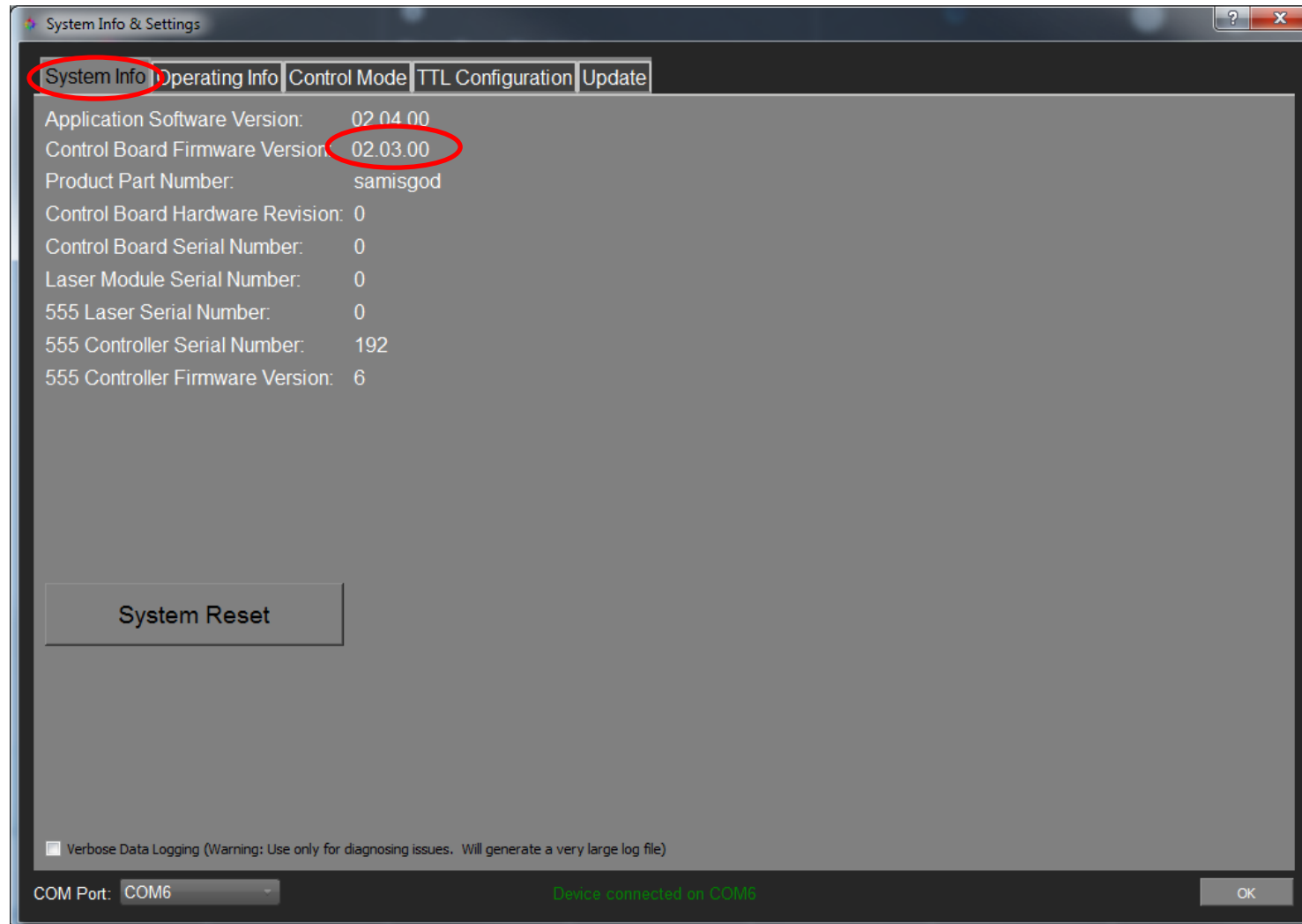


- Next, locate “LDI Setup.exe”
  - If delivered on USB flash drive, run from flash drive or copy to disk
  - If delivered via attachment or link, save “LDI Setup.exe” to disk
- Double-click “LDI Setup.exe” to run the setup file and follow prompts
- InstallShield will indicate when the setup is complete
- LDI drivers will automatically install after InstallShield completes; completion will be indicated
- “LDI.exe” will be installed in C:\Program Files (x86)\89 North\LDI

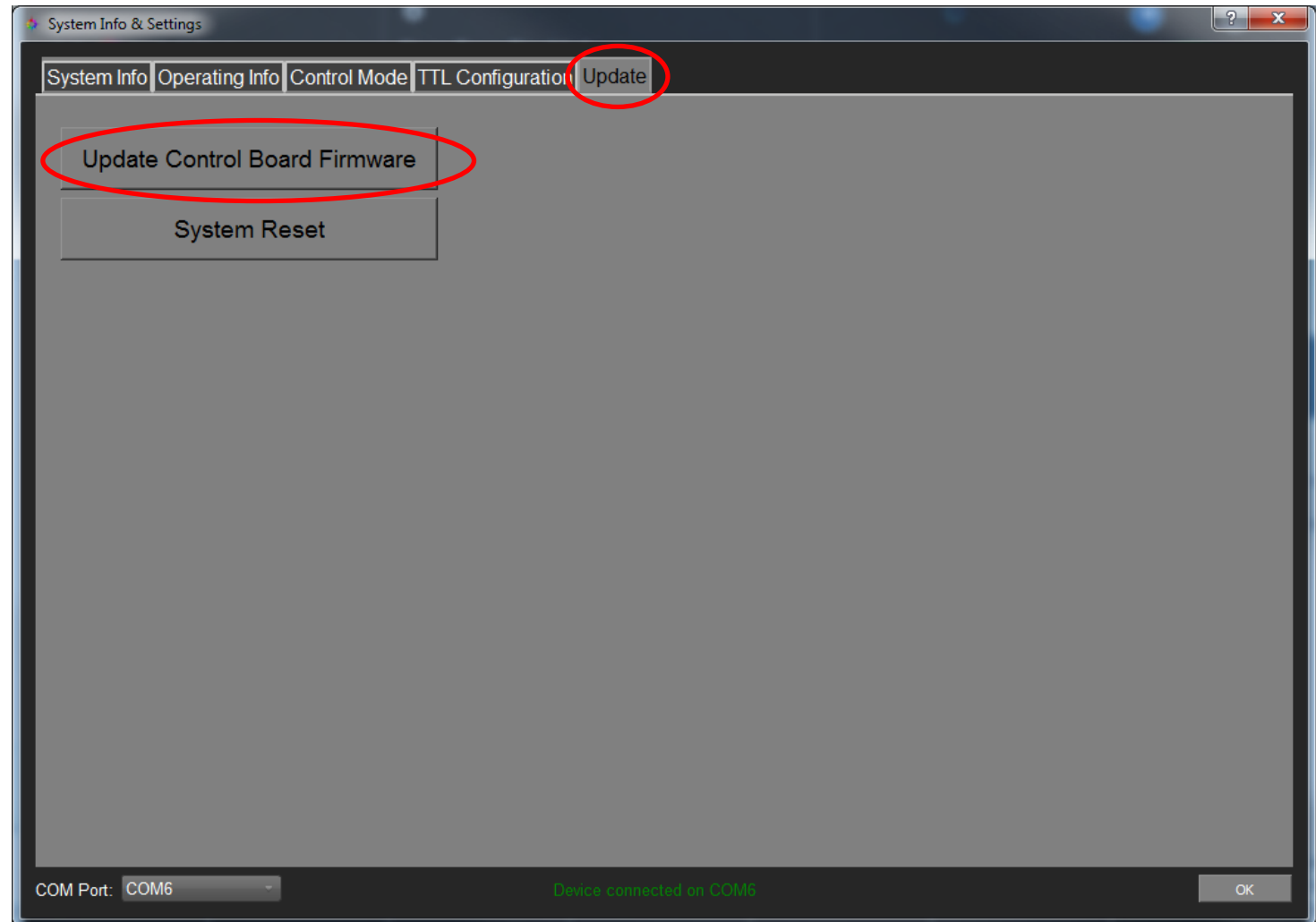
- Firmware updates are delivered as .7z files
- Save the “LDI\_VXX\_XX\_XX.7z” file to disk
- Launch the LDI GUI (LDI.exe)
- If the LDI is not already connected and powered, connect and power it now
- Select “System Info & Settings”



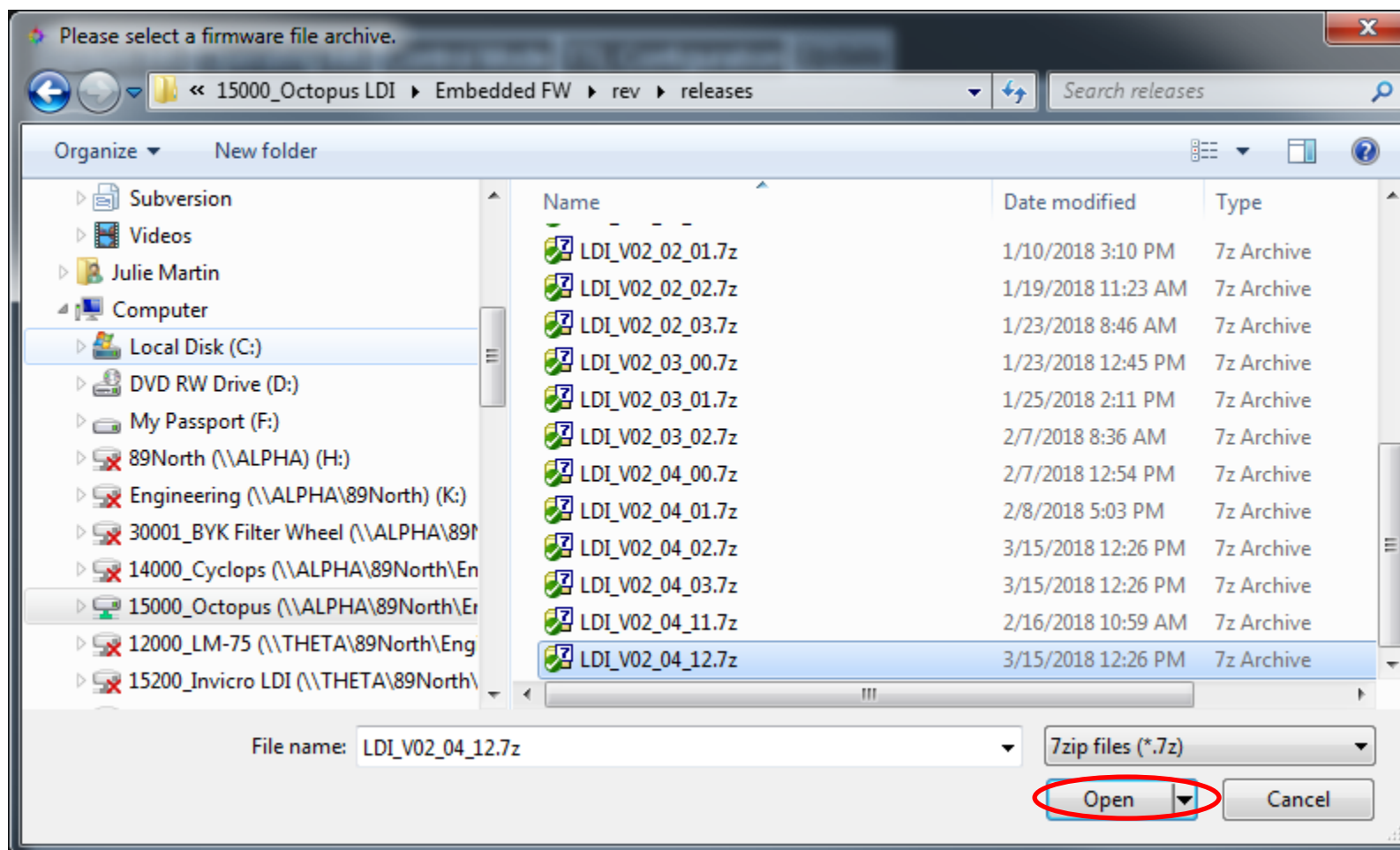
- Before beginning the firmware update, please note the current version:



- In the “System Info & Settings” window, select the “Update” tab
- Select “Update Control Board Firmware”

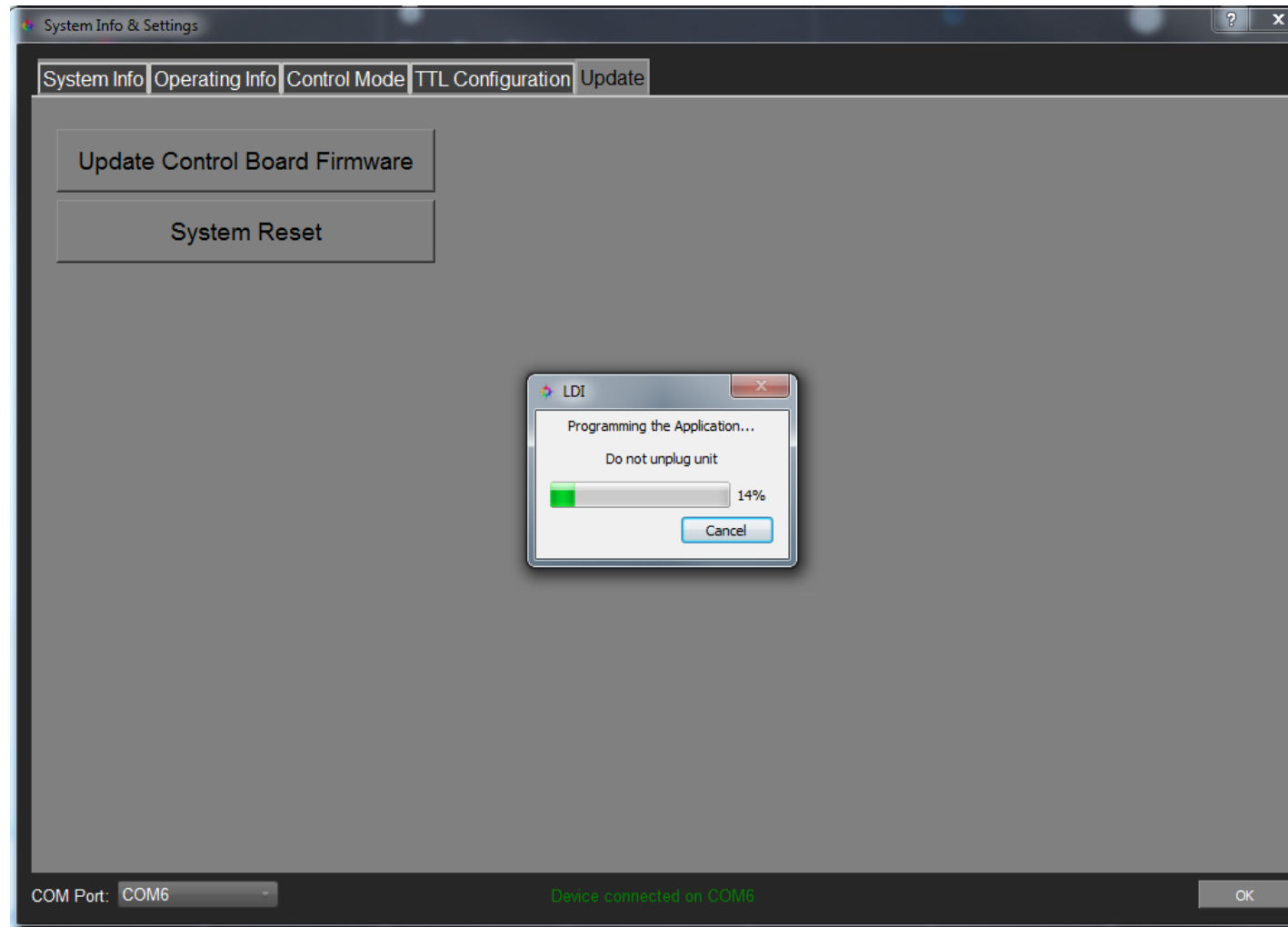


- Navigate to the “LDI\_VXX\_XX\_XX.7z” that was saved to disk
- Select the file and click “Open”

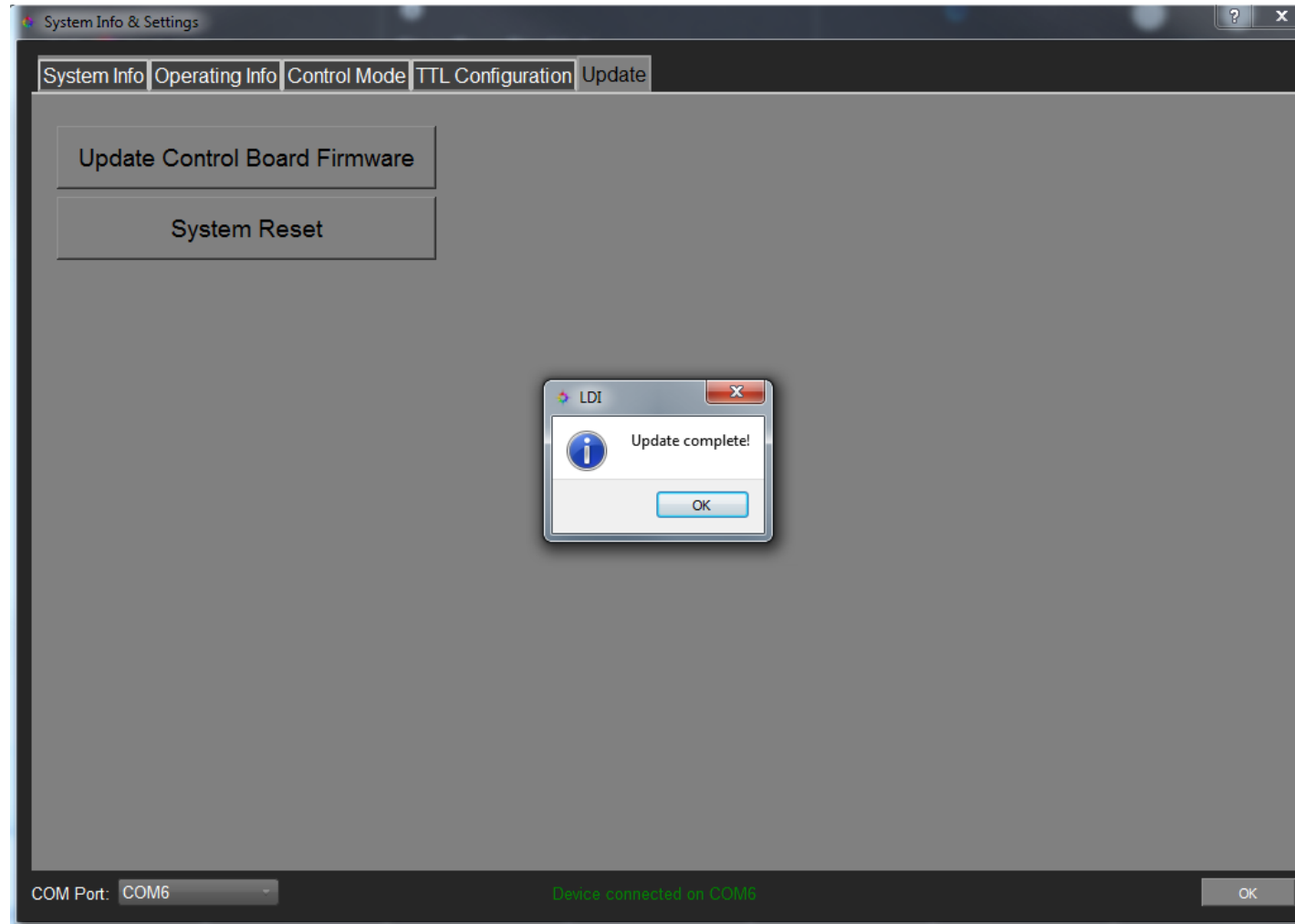




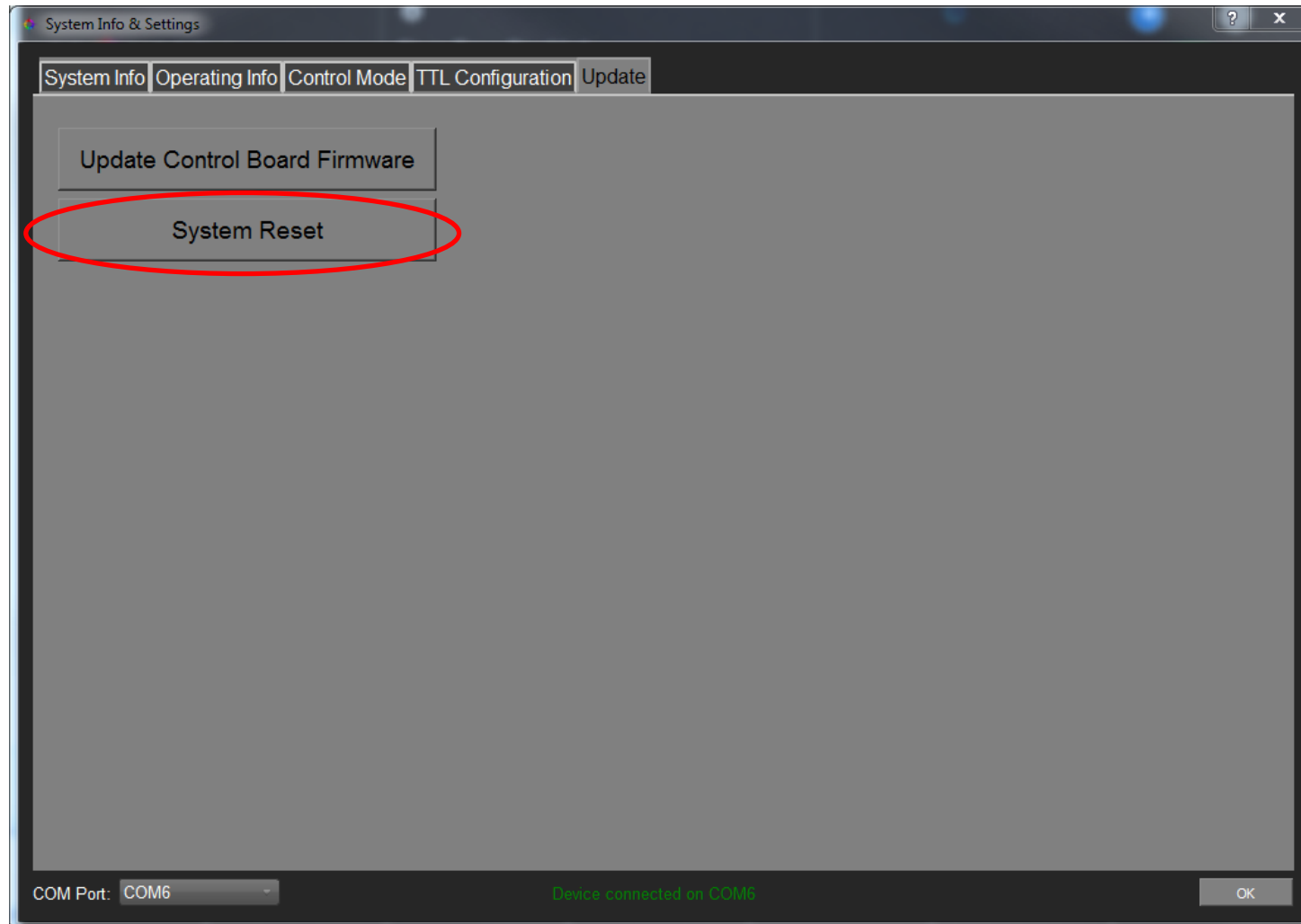
- The firmware update will begin; do not unplug the unit while the firmware update is in progress



- The GUI will inform when the firmware update is complete:



- The system should automatically restart; if it does not, click “System Reset” on the “Update” tab:



- Note the firmware version has been updated:

