

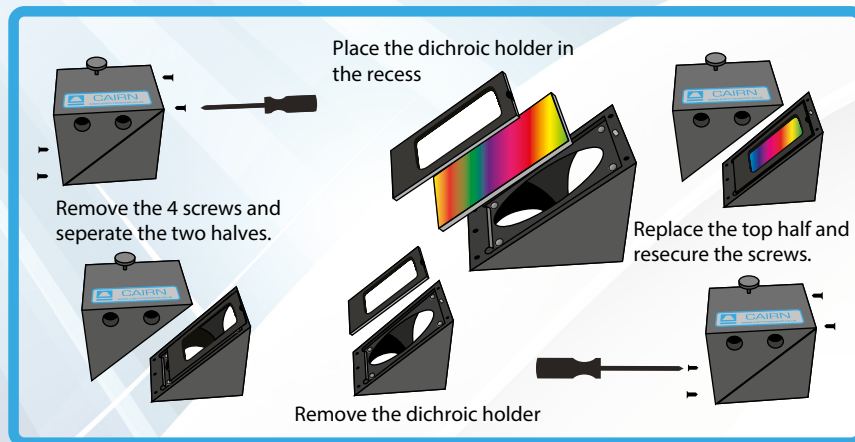
Installing Dichroic Mirrors & Filters into the Cairn cube

Quick Start

We use the same Cairn cubes across our product range, from our illumination to emission products and as such, the following applies to all. Cairn filter cubes accept 25mm filters, with a recess to mount dichroics between 25.5x36x1mm, to 26x40x3mm. For our illumination range, 1mm thick dichroics will suffice, whereas for our emission range, we recommend Chroma's Ultraflat 2mm thick dichroics which we have extensively tested and produce minimal image distortion.

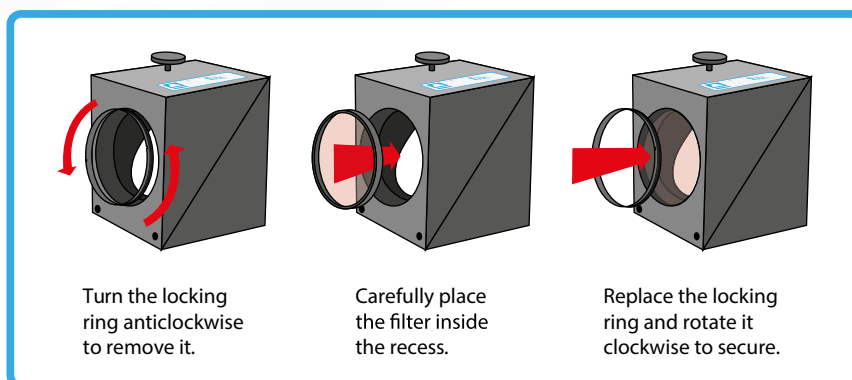
For any filter or mirror advice (not limited to Cairn products), please get in touch as we are UK stockists for Chroma – we are happy to help!

Installing Dichroic Mirrors into the Cairn Filter Cube



To fit your dichroic mirror into the Cairn Filter Cube remove each of the four screws that secure the two halves together. You will then be able to gently pull the two halves apart. There is one steel locating rod in each half of the cube to ensure the correct alignment when it is reassembled. Once the two halves of the cube are separated place the dichroic mirror (active side down) into the rectangular recess. Then simply reassemble the cube and tighten the screws.

Installing Filters into the Cairn Filter Cube



To add a filter to the cube, you will first need to use the Cairn filter removal tool to remove the retaining ring. To do so, align the notches on the removal tool, with the grooves on the retaining ring and rotate the tool anti-clockwise. Once the retaining ring has been removed, drop the filter into the filter cube. Generally, for Chroma filters, the arrow on the filter should be pointing towards the sample. For Semrock filters, the arrow should point in the direction of the light path. (For more information see filter manufacturer guidelines.) The retaining ring may then be replaced, holding the filter firmly in place.